

STANDARD DEPARTURE CHART
INSTRUMENT (SID) - ICAO

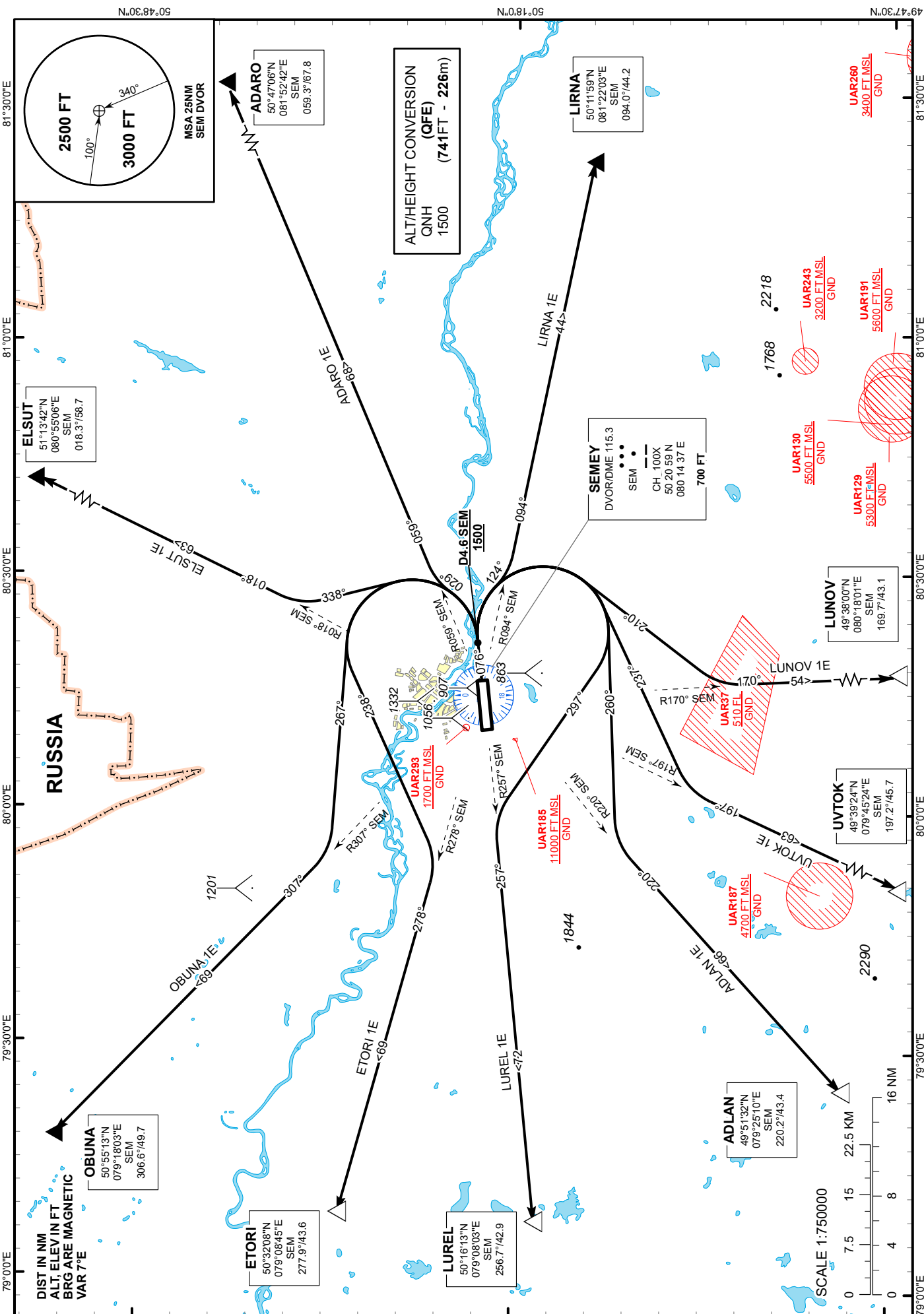
TRANSITION ALTITUDE
10000 FT

SEMEY TOWER 128.0
SEMEY ATIS (EN) 118.5
SEMEY ATIS (RU) 122.4

ADARO 1E, ADLAN 1E, ELSUT 1E,
ETORI 1E, LIRNA 1E, LUNOV 1E,
OBUNA 1E, LUREL 1E, UVTKO 1E

SEMEY
RWY 08

CHANGE: Renumbered.



| STANDARD DEPARTURE ROUTES - INSTRUMENT (SID) SEMEY RWY 08 |
|---|
| OBUNA 1E After take-off climb straight ahead to 1500 FT or above. At 4.6NM SEM turn LEFT on track 267° until intercept R307° SEM, then proceed on track 307° to OBUNA (R306.6° D49.7NM SEM). |
| ELSUT 1E After take-off climb straight ahead to 1500 FT or above. At 4.6NM SEM turn LEFT on track 338° until intercept R018° SEM, then proceed on track 018° to ELSUT (R018.3° D58.7NM SEM). |
| ADARO 1E After take-off climb straight ahead to 1500 FT or above. At 4.6NM SEM turn LEFT on track 029° until intercept R059° SEM, then proceed on track 059° to ADARO (R059.3° D67.8NM SEM). |
| LIRNA 1E After take-off climb straight ahead to 1500 FT or above. At 4.6NM SEM turn RIGHT on track 124° until intercept R094° SEM, then proceed on track 094° to LIRNA (R094.0° D44.2NM SEM). |
| LUNOV 1E After take-off climb straight ahead to 1500 FT or above. At 4.6NM SEM turn RIGHT on track 210° until intercept R170° SEM, then proceed on track 170° to LUNOV (R169.7° D43.1NM SEM). |
| UVTOK 1E After take-off climb straight ahead to 1500 FT or above. At 4.6NM SEM turn RIGHT on track 237° until intercept R197° SEM, then proceed on track 197° to UVTOK (R197.2° D45.7NM SEM). |
| ADLAN 1E After take-off climb straight ahead to 1500 FT or above. At 4.6NM SEM turn RIGHT on track 260° until intercept R220° SEM, then proceed on track 220° to ADLAN (R220.2° D43.4NM SEM). |
| LUREL 1E After take-off climb straight ahead to 1500 FT or above. At 4.6NM SEM turn RIGHT on track 297° until intercept R257° SEM, then proceed on track 257° to LUREL (R256.7° D42.9NM SEM). |
| ETORI 1E After take-off climb straight ahead to 1500 FT or above. At 4.6NM SEM turn LEFT on track 238° until intercept R278° SEM, then proceed on track 278° to ETORI (R277.9° D43.6NM SEM). |